

Synthesized Intelligent PIR with D/N camera

## SIP-3020CAM DN



The SIP-3020CAM DN in the REDWATCH-V Series consists of a high-reliability synthesized intelligent PIR and a high-quality camera unit.

Misalignment of the camera angle and the detection area potentially poses a serious problem for video monitoring. It results in the detector being triggered for no apparent cause even though the installers may have believed that they had made installation with the proper alignment.

High quality camera with varifocal lens can be adjustable to get preferable view.

REDWATCH-V perfectly aligns the camera view angle with the detection area so that every alarm can be visually verified.

For new installation of video surveillance system, it is an ideal product.

### FEATURES

- Intelligent PIR detection system
- Anti-rotation with three-axis accelerometer
- Anti-masking with photo-beam
- Three dual pyro-element
- Sensitivity selectors for near / far area independently
- Detection logic selector
- Detection range selector
- Independent outputs N.C. and N.O.
- Alarm interval time
- Reinforced polycarbonate housing
- High-quality camera image: Day (colour)/Night(B/W)
- 480 TV lines
- Varifocal lens 3-9mm
- Minimum illumination: Day(colour)0.5lx , Night (B/W):0.03 lx

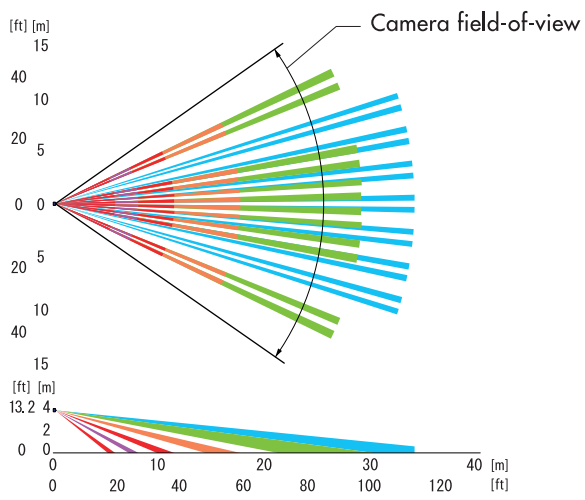
### OPTIONS

- AVF-1-Area View Finder
- OPM-WT-Audible Walk Tester
- SIP-HU Heating unit

### SPECIFICATIONS

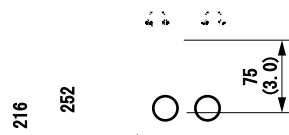
Model	SIP-3020CAM DN	SIP-3020CAM DN
Version	EU	US
Detection method	Passive infrared	
Coverage	30 x 20 m (100 x 65 ft.)	
Power input	12 VDC	
Current draw	180mA (12 VDC)	
Mounting height	2.3 to 4 m (7.6 to 13 ft.)	
Sensitivity selector	Far: SH/H/M/L, Near: SH/H/M/L	
Range selector	Far: On/Off	
Alarm output	N.O., N.C. 28 VDC 0.2A max.	
Alarm interval period	Off/15, 30, 60 sec.	
Trouble output	N.C., 28 VDC 0.2 A max.	
Tamper output	N.C., 28 VDC 0.1 A max.	
Alarm period	Approx. 2 sec.	
Warm-up period	Approx. 60 sec.	
Image sensor	1/3" CCD (PAL)	1/3" CCD (NTSC)
TV line	480TVL (at wide position)	
Resolution	PAL 752 H x 582 V	NTSC 768 H x 494 V
Lens	f= 3 to 9mm, varifocal, DC auto iris lens F1.2	
Minimum illumination	Day (colour) : 0.5 lx (F1.2) Night (B/W) : 0.03 lx (F1.2)	
Video output	1.0V <sub>pp</sub> /75Ω / BNC connector, PAL	1.0V <sub>pp</sub> /75Ω / BNC connector, NTSC
Operating temperature	-25 to +60°C, -40 to +60°C with optional heater unit (-13 to +140°F, -40 to +140°F optional heater unit)	
IP rating	Main unit: IP65 Chassis: IP55	
Dimensions (H x W x D)	252 x 102 x 317 mm (9.9 x 4.0 x 12.5 in.)	
Weight	1.5 kg (52 oz)	

\* Specifications and design are subject to change without prior notice.



102

317



unit:mm (inch)